



**Brise Soleil Orientables / Aluminio**  
*Brise-Soleil Orientables / Aluminium*  
Movable Solar Shading Louvers / Aluminium

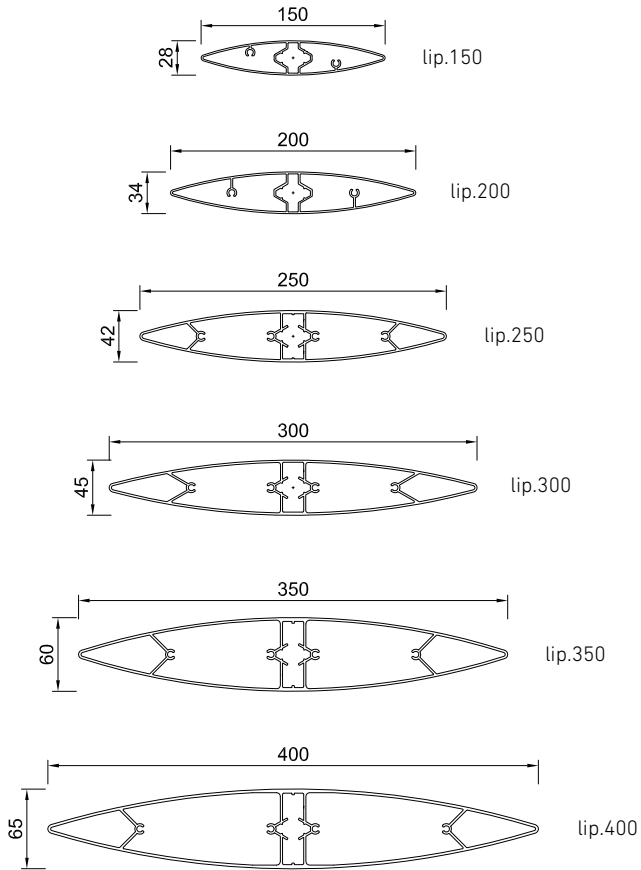
# brise soleil

aluminio | *aluminium* | aluminium

lamas de gran formato | *lames grand format* | large format blades

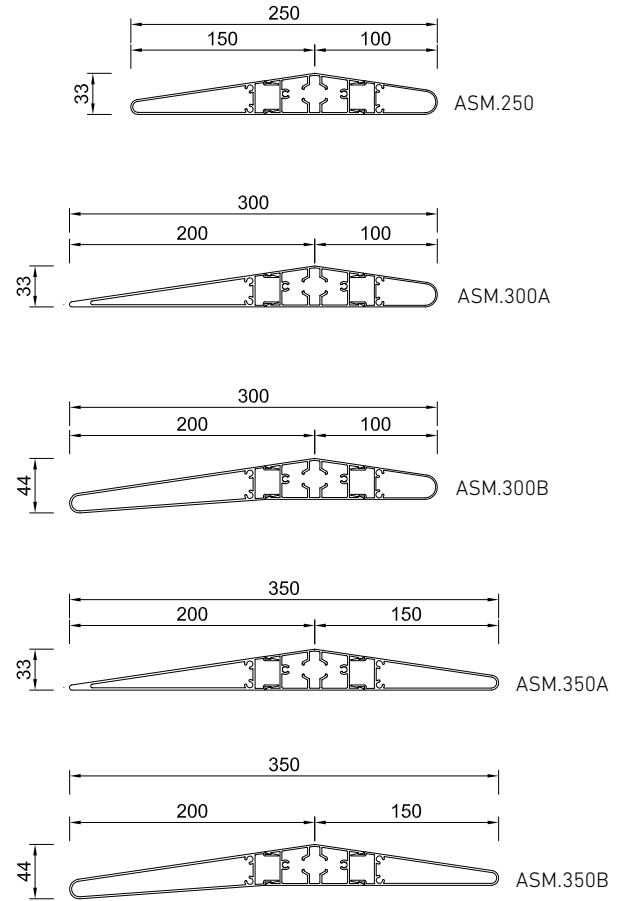
## tamilip

lamas orientables y fijas | *lames orientables et fixes* | movable and fixed blades

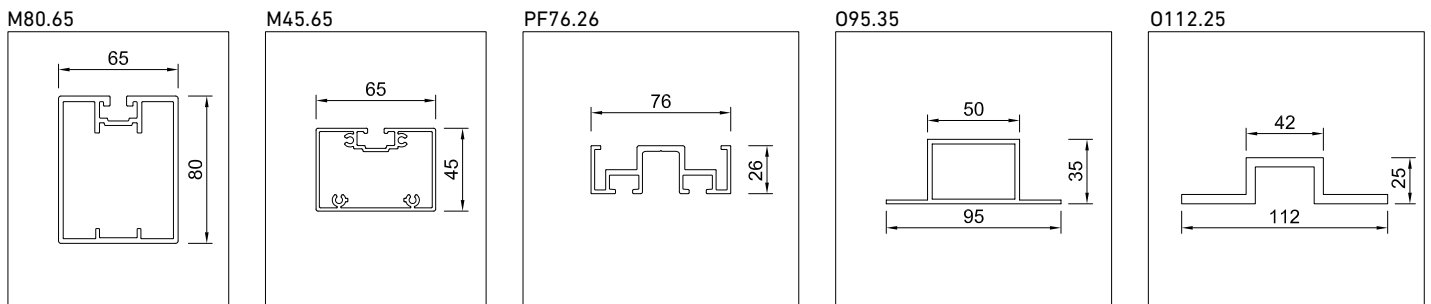


## variant asimetric

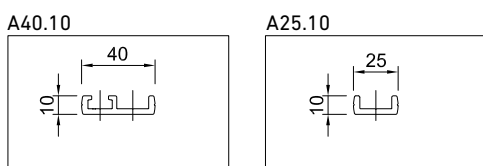
lamas orientables | *lames orientables* | movable blades



## montantes | *montants* | mullions



## arrastre | *barre de manouvre* | drive road



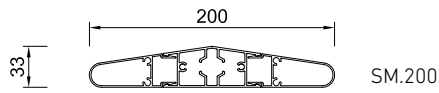
# brise soleil

aluminio | *aluminium* | aluminium

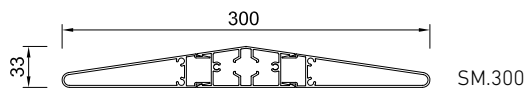
laminas de gran formato | *lames grand format* | large format blades

## variant simetric

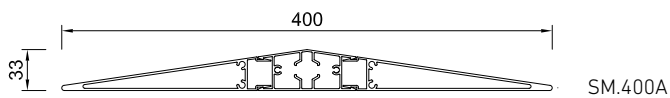
laminas orientables | *lames orientables* | movable blades



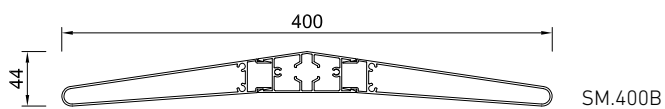
SM.200



SM.300



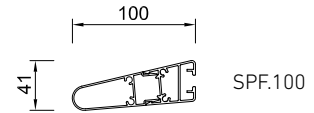
SM.400A



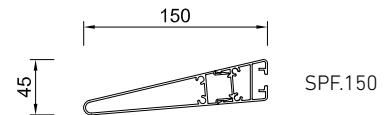
SM.400B

## SPF

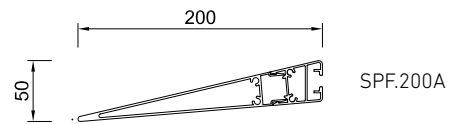
laminas fijas continuas | *lames fixes filantes* | continuous fixed blades



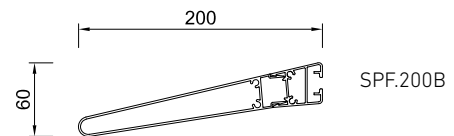
SPF.100



SPF.150



SPF.200A



SPF.200B



brise soleil  
aluminio | *aluminium* | aluminium  
laminas orientables | *lames orientables* | movable blades



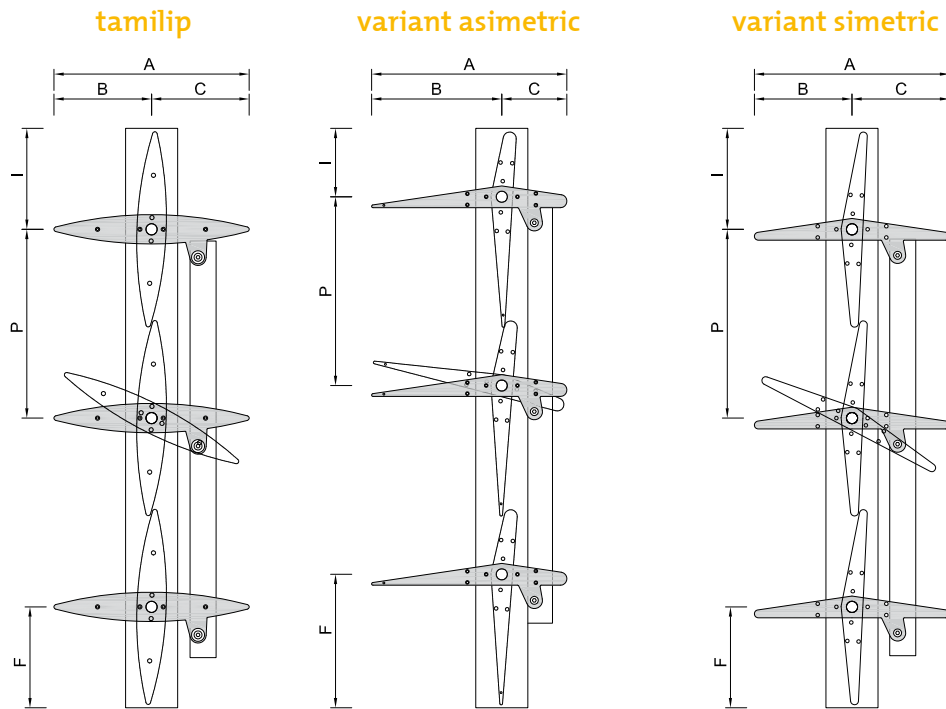
**brise soleil**

**aluminio** | *aluminium* | aluminium

**laminas orientables** | *lames orientables* | movable blades



brise soleil  
 aluminio | *aluminium* | aluminium  
 lamas orientables | *lames orientables* | movable blades



lama lame blade	cotas principales dimensions principales main dimensions						montante montant mullion		posición lama position lame blade position		accionamiento commande operation
	A	B	C	I	P (*)	F	M45.65	M80.65	H	V	
<b>TAMILIP</b>											
Lip.150	150	75	75	80	140	80	○	○	✓	✓	👤 ⚙️ ⚡
Lip.200	200	100	100	105	190	105	○	○	✓	✓	👤 ⚙️ ⚡
Lip.250	250	125	125	130	240	130	○	○	✓	✓	👤 ⚙️ ⚡
Lip.300	300	150	150	155	290	155	○	○	✓	✓	👤 ⚡
Lip.350	350	175	175	180	340	180		○	✓	✓	👤 ⚡
Lip.400	400	200	200	205	390	205		○	✓	✓	👤 ⚡
<b>VARIANT ASIMETRIC</b>											
ASM.250	250	150	100	155	240	105	○	○	✓	✓	👤 ⚙️ ⚡
ASM.300A	300	200	100	205	290	105	○	○	✓	✓	👤 ⚡
ASM.300B	300	200	100	205	290	105	○	○	✓	✓	👤 ⚡
ASM.350A	350	200	150	205	340	155	○	○	✓	✓	👤 ⚡
ASM.350B	350	200	150	205	340	155	○	○	✓	✓	👤 ⚡
<b>VARIANT SIMETRIC</b>											
SM.200	200	100	100	105	190	105	○	○	✓	✓	👤 ⚙️ ⚡
SM.300	300	150	150	155	290	155	○	○	✓	✓	👤 ⚡
SM.400A	400	200	200	205	390	205	○	○	✓	✓	👤 ⚡
SM.400B	400	200	200	205	390	205	○	○	✓	✓	👤 ⚡

(\*) estandar con solape | *standard avec chevauchement* | standard with overlap

👤 manual | *manuelle* | manually

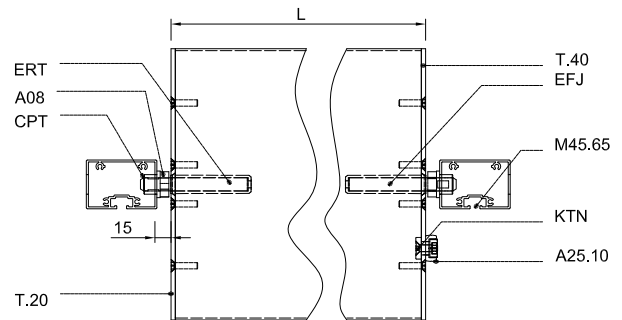
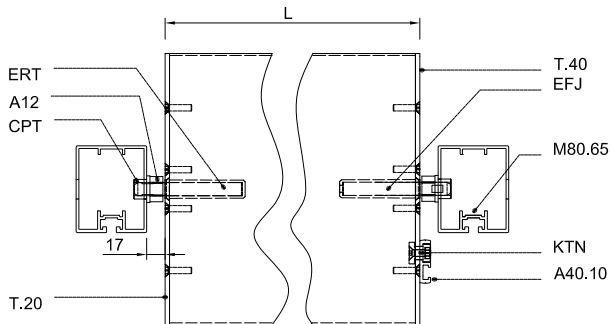
⚙️ mecánico | *mécanique* | mechanical

⚡ motor | *moteur* | motor

# brise soleil

aluminio | *aluminium* | aluminium

lamas orientables | *lames orientables* | movable blades



longitud maxima de lama recomendada (mm) longueur maximale de la lame recommandé (mm) recommended maximum length of blade (mm)								
modelo modele model			horizontal <i>horizontal</i> horizontal			vertical <i>verticale</i> vertical		
	lxx (cm <sup>4</sup> )	lyy (cm <sup>4</sup> )	600 Pa	800 Pa	1250 Pa	600 Pa	800 Pa	1250 Pa
<b>TAMILIP</b>								
Lip.150	4,9	89,18	2900	2700	2400	3100	2850	2500
Lip.200	9,32	220,1	3200	3000	2650	3400	3100	2750
Lip.250	22,75	535,23	3750	3500	3150	3950	3700	3250
Lip.300	31,49	981,71	3900	3650	3250	4100	3800	3400
Lip.350	73,7	1684,75	4650	4350	3900	4900	4550	4000
Lip.400	121,7	2723,8	5100	4750	4250	5400	5000	4400
<b>VARIANT ASIMETRIC</b>								
ASM.250	13,61	480,33	3300	3100	2750	3500	3200	2850
ASM.300A	15,56	927,05	3300	3100	2750	3500	3200	2850
ASM.300B	19,75	872,62	3450	3250	2900	3700	3400	3000
ASM.350A	16,9	1382,3	3200	3000	2650	3400	3150	2800
ASM.350B	20,99	1308,41	3400	3150	2800	3600	3350	2950
<b>VARIANT SIMETRIC</b>								
SM.200	11,95	246,1	3400	3200	2850	3600	3300	2950
SM.300	15,12	802,28	3250	3000	2700	3450	3200	2800
SM.400A	18,38	2159,15	3150	2950	2650	3350	3100	2750
SM.400B	28,85	1956,51	3550	3300	2950	3750	3450	3050

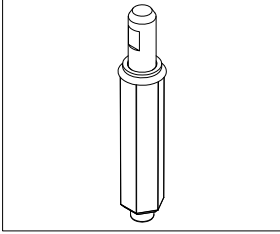
# brise soleil

aluminio | *aluminium* | aluminium

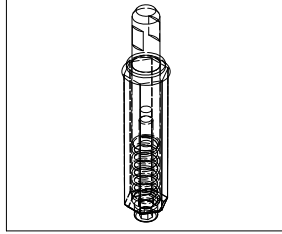
laminas orientables | *lames orientables* | movable blades

accesorios | *accessoires* | accessories  
efj | *axes* | axes

EFJ

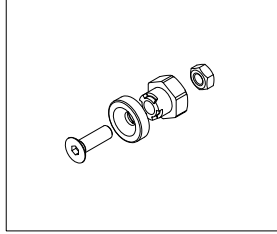


ERT



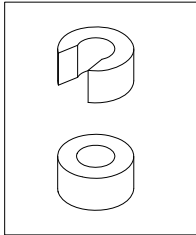
rótula | *rotule* | kneecap

KRT

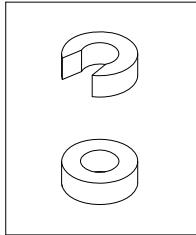


anilla eje 8mm & 12mm | *circlip 8mm & 12mm*

A12

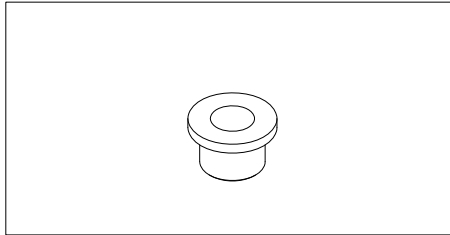


A08



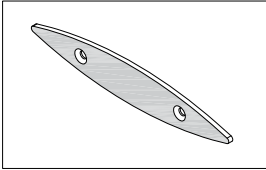
casquillo pivotación | *canon épaulé* | bearing support

CPT

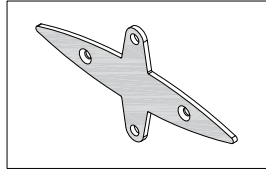


testeras | *embouts* | endplates - ALU 4mm

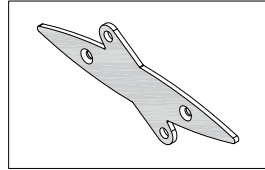
T.10



T.00

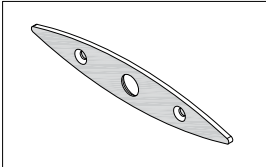


T.45

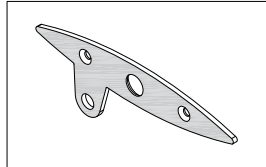


**lama fija | *lame fixe* | fixed blade**  
Lip.150 / Lip.200 / Lip.250  
Lip.300 / Lip.350 / Lip.400

T.20



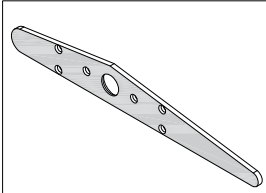
T.40



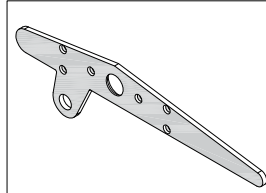
**lama orientable | *lame orientable* | movable blade**

Lip.150 / Lip.200 / Lip.250  
Lip.300 / Lip.350 / Lip.400

T.20



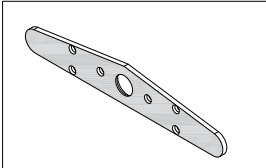
T.40



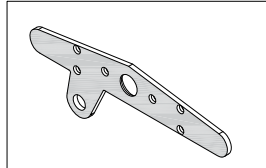
**lama orientable | *lame orientable* | movable blade**

ASM.250 / ASM.300A / ASM.300B  
ASM.350A / ASM.350B

T.20



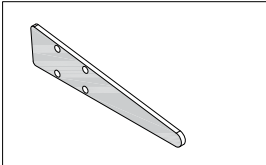
T.40



**lama orientable | *lame orientable* | movable blade**

SM.200 / SM.300  
SM.400A / SM.400B

T.10



**lama fija | *lame fixed* | fixed blade**

SPF.100 / SPF.150  
SPF.200A / SPF.200B



brise soleil

aluminio | *aluminium* | aluminium

lames orientables | *lames orientables* | movable blades



montaje del sistema  
*assemblage du système*  
system assembly

ensamble de lama  
*ensemble de lame*  
blade assembly

polideportivo | *salle de sports* | sports hall  
Lip.300  
Ramon Andrada Arquitectos  
Madrid



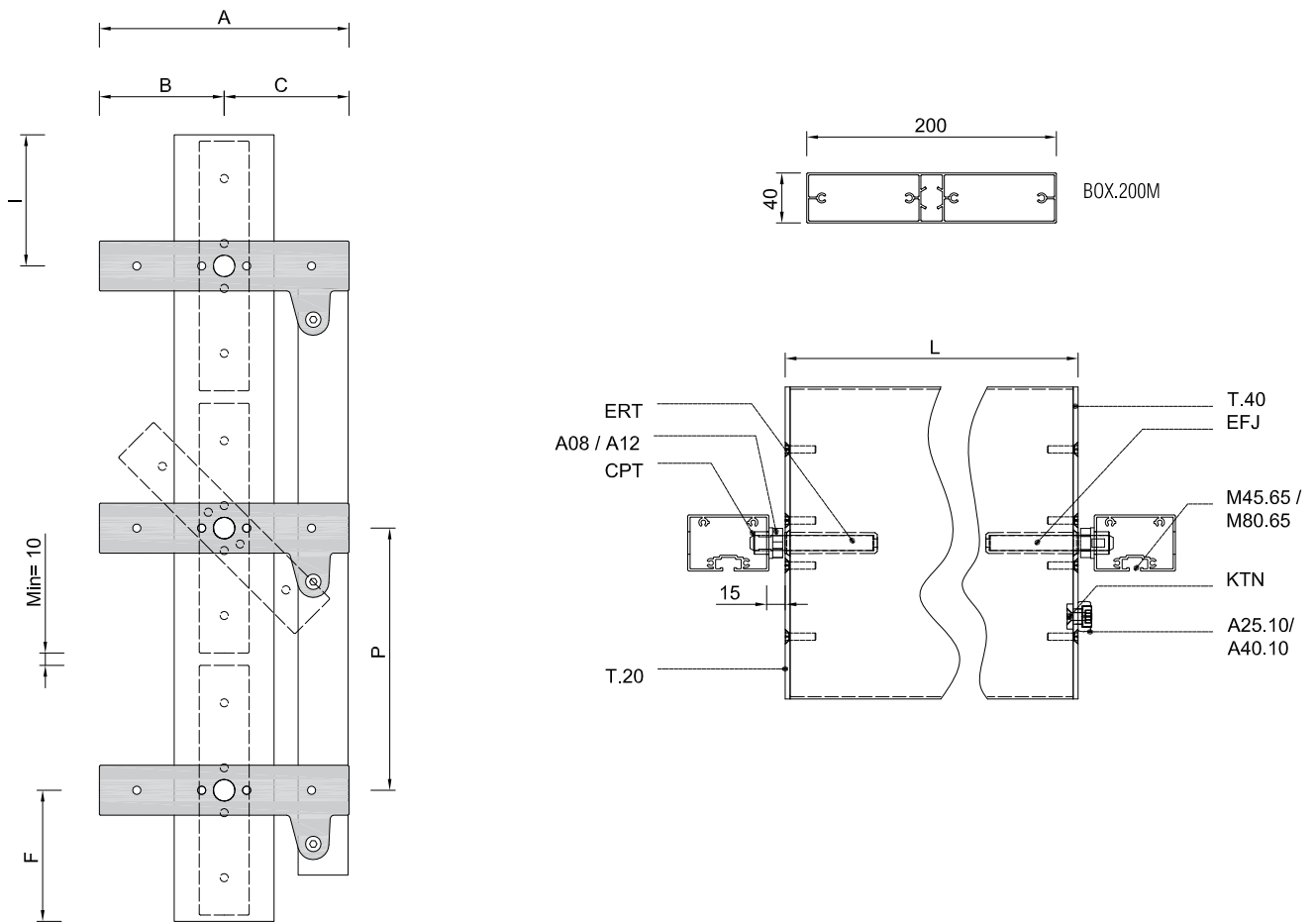
universidad | *université* | university  
ASM.350  
Xavier Romani Bove & Joan Batet Pons  
Tarragona











escuela de bomberos | école de pompiers | fireman's school  
Lip.400  
Barcelona

brise soleil - **tamibox**  
 aluminio | *aluminium* | aluminium  
 lama orientable | *lame orientable* | *movable blade*



lama lame blade	cotas principales dimensions principales main dimensions						montante montant mullion		posición lama position lame blade position		accionamiento commande operation
	A	B	C	I	P(*)	F	M45.65	M80.65	H	V	
<b>Box.200M</b>	200	100	100	105	190	105	○	○	✓	✓	  

longitud maxima de lama recomendada (mm) longueur maximale de la lame recommandé (mm) recommended maximum length of blade (mm)								
modelo modele model			horizontal horizontal horizontal			vertical verticale vertical		
	lxx (cm <sup>4</sup> )	lyy (cm <sup>4</sup> )	600 Pa	800 Pa	1250 Pa	600 Pa	800 Pa	1250 Pa
<b>Box.200M</b>	25,1	369,85	3800	3500	3200	4000	3700	3400

 manual | *manuelle* | manually  
 mecánico | *mécanique* | mechanical  
 motor | *moteur* | motor