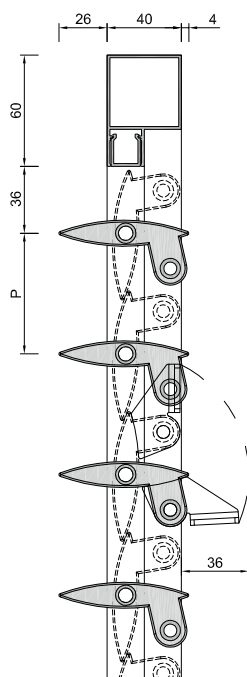
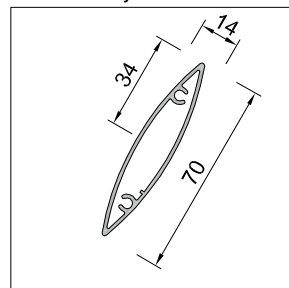
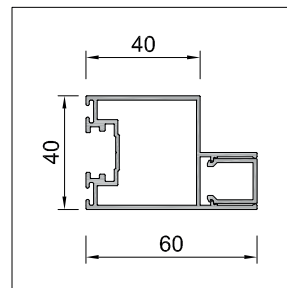


persianas orientables | *persiennes* | adjustable shuttersALUMINIO | *ALUMINIUM* | ALUMINIUMlamas orientables | *lames orientables* | movable blades**ALT70/40L**

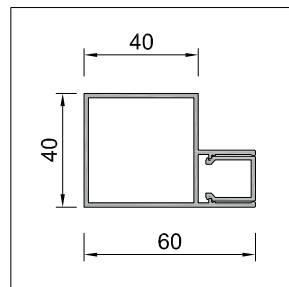
Alba Disseny ALT70



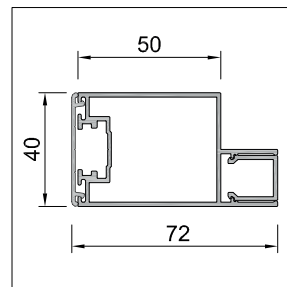
40SCL



40L



50SCL + TL40



Carta de colores disponibles / Chartes de couleurs disponibles / Color charts available

RAL Classic, RAL Design, Futura

Opción decoración / Option décoration / Decoration option

Símil madera, Similaire bois, Wood appearance

Travesaños intermedios / Traverses intermédiaires / Intermediate transoms

TH-40L, TV-40L

Peso del sistema / Poids du système / System weight

10.4 kg/m²

Longitud máxima de lama / Largeur maximale de lame / Maximum blade length

1500 mm, sin travesaño intermedio, 1500 mm, sans traverse intermédiaire, 1500 mm, without intermediate transom

Paso de lama P / Écart de lame P / Blade pitch P

Variable (standard 65 mm)

Testeros / Embouts / Blade end caps

Poliamida inyectada, Injection en polyamide, Injected polyamide

Accionamiento / Commande / Drive

Manual o motorizado, Manuelle ou motorisée, Manual or motorized

Soluciones constructivas | solutions constructives | constructive solutions

